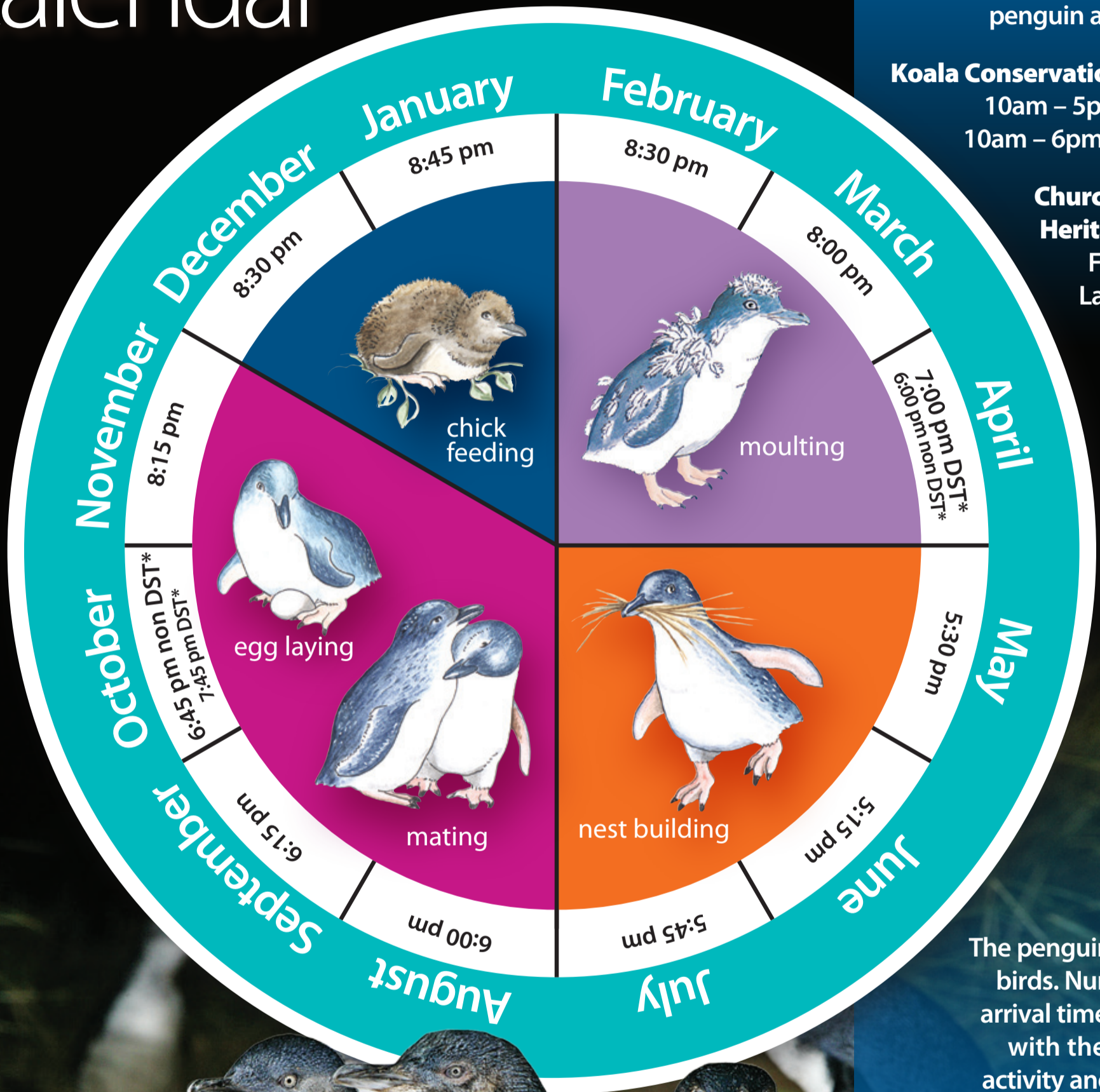


# Penguin breeding & arrival time calendar



## Opening hours

**Penguin Parade:**  
10am to one hour after penguin arrival time

**Antarctic Journey:**  
From 10am  
Last entry two hours before penguin arrival time

**Koala Conservation Centre:**  
10am – 5pm (winter)  
10am – 6pm (summer)

**Churchill Island Heritage Farm:**  
From 10am  
Last entry at 4.45pm

The penguins are wild birds. Numbers and arrival times will vary with the life-cycle activity and weather.

Visitors should arrive at least 1 hour prior to penguin arrival time to enjoy the award winning interactive and educational displays.

**Download the free app!**

Penguin Parade Phillip Island



For more information:

[penguins.org.au](http://penguins.org.au) ● 5951 2800

